

Could you benefit from better, faster broadband?

More than 46,000 Derbyshire homes and businesses have signed up to receive better, faster broadband thanks to Digital Derbyshire.

Could you be next?

Digital Derbyshire – a partnership between Derbyshire County Council, UK Government and Openreach – has made superfast broadband* available to more than 97,000 premises and an improved, faster broadband connection available to a further 5,000 properties which are unable to get superfast.

Find out how you could benefit at:
digitalderbyshire.org.uk

*Superfast broadband is defined by UK Government as download speeds in excess of 24Mbps

Make a difference to your community

Apply today for an 'Action Grant' for your group, club or charity.

We've got £1.5m to give away in Derbyshire to support:

- **Youth Activities:** anything from setting up a youth club to supporting mental health initiatives
- **Community Activities:** setting up new groups, holding local events or starting community projects
- **Physical Activity and Sport:** initiatives to encourage people of all ages to be more active
- **Community Safety:** for projects aimed at reducing crime, scams awareness, tackling anti-social behaviour and keeping residents safe.

Find out how to apply and see some success stories at: derbyshire.gov.uk/action



Your Council Tax 2019-20

derbyshire.gov.uk/budget
budget@derbyshire.gov.uk

improving life • partnerships • proud of Derbyshire
quality services • enterprising • effective
value for money • efficient

Spending your money where it's needed most



Looking after **3,500** miles of **roads** and **pavements**

Fixing **67,000** potholes

Gritting 1,550 miles of roads

Cut-price **bus fares** for **187,000** pensioners and **64,000** teenagers

Disposing of **250,000** tonnes of **rubbish** and recycling

Looking after more than **80** countryside sites

Running **nine recycling** centres across the county open **362** days a year



Supporting **45** libraries and **two** mobile libraries

Promoting Derbyshire to **tourists** – worth **£2.15 billion** to the local economy

Helping people find a reliable **trader** through our **1,000** Trusted Traders

Registering **2,800** births

Welcoming more than **32,700** visitors to the Buxton Museum and Art Gallery

*Includes council tax, direct Government funding and use of reserves.
H&C – Health and communities inc trading standards. *pp – per person.

This is a summary. For more information derbyshire.gov.uk/budget



Helping **13,500** older and disabled people live **independently** at home

Supporting **20,000** carers to look after family and friends

£30m to provide new, high quality, affordable **residential care**

Running **23** residential homes and community **care** centres and eight extra care housing schemes

One-to-one **support** for more than **4,800** carers and respite care to around **800**

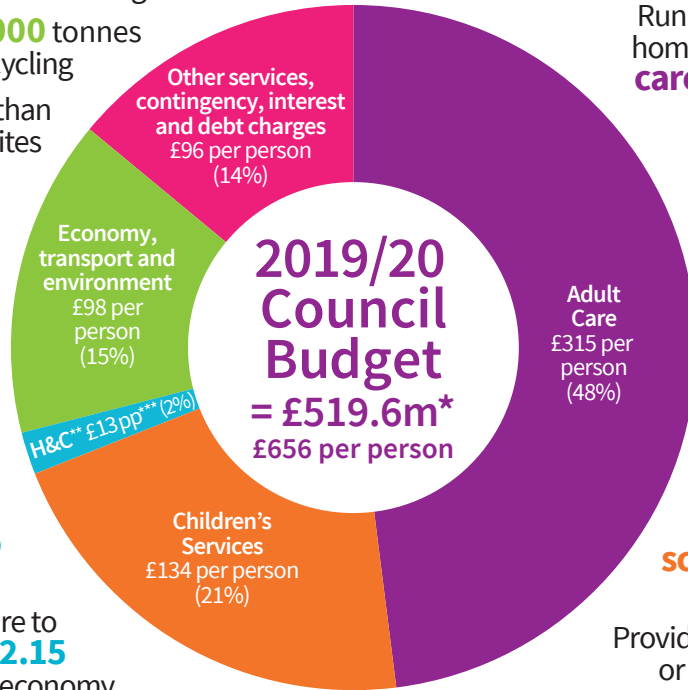


Supporting **416** schools to offer the best education

Providing **foster** homes or residential care for **770** children

Supporting **8,000** disabled children and their families

Running **21** children's centres and helping **30,000** under-fives get the best **start in life**



What we'll be spending on your services

REVENUE EXPENDITURE AND INCOME

BUDGET 2018-19			BUDGET 2019-20			
GROSS (£m)	INCOME (£m)	NET (£m)	SERVICES	GROSS (£m)	INCOME (£m)	NET (£m)
294.9	-58.7	236.2	Adult Care	309.3	-59.7	249.6
653.8	-555.1	98.7	Children's Services	667.5	-561.4	106.1
46.0	-2.4	43.6	Refuse Disposal	47.0	-2.8	44.2
22.2	-5.0	17.2	Highways and Countryside	21.7	-6.2	15.5
22.8	-7.2	15.6	Public Transport	22.2	-7.3	14.9
3.1	-1.3	1.8	Planning	3.8	-0.8	3.0
40.5	-40.5	0.0	Public Health	39.5	-39.5	0.0
9.4	-1.4	8.0	Health and Communities	9.8	-1.4	8.4
1.4	-0.1	1.3	Trading Standards	1.4	-0.1	1.3
11.3	0.0	11.3	Contingency	5.1	0.0	5.1
54.1	-7.2	46.9	Other Services	55.4	-7.3	48.1
1159.5	-678.9	480.6	TOTAL	1182.7	-686.5	496.2

	27.3	Plus debt charges	29.3
	-5.0	Less interest receipts	-5.9
	0.3	Internal financing	0.0
	503.2	NET BUDGET REQUIREMENT	519.6
	0.0	Less Revenue Support Grant	-13.5
	-94.2	Less Business Rates	-19.2
	-43.0	Less Top Up Grant	-93.4
	-40.4	Less General Grants	-54.6
	-11.5	Less Use of Reserves	-9.5
	314.1	COUNCIL TAX	329.4

REASONS FOR CHANGE IN GROSS EXPENDITURE/BUDGET REQUIREMENT AND EFFECT ON COUNCIL TAX (£m)

Pay and price increases due to inflation and factors outside the council's control	4.1
Service pressures	36.8
Budget savings	-11.7
Change in services funded from grants and other income	-6.0
CHANGE IN GROSS EXPENDITURE	23.2
Increase in service income, such as increased charges for services	-7.5
Increase in internal financing	-0.3
Increase in debt charges	1.9
Increase in interest on balances	-1.0
CHANGE IN BUDGET REQUIREMENT	16.3
Less increase in Revenue Support Grant	-13.5
Add decrease in Business Rates	75.0
Less increase in Top Up Grant	-50.3
Less increase in General Grants	-14.2
Add decrease in Use of Reserves	2.0
INCREASE IN COUNCIL TAX	15.3



More details at derbyshire.gov.uk/budget